

## FMS-webDIRECTOR 040

## FMS-webDIRECTOR 050

The steering frames of the *FMS-webDIRECTOR* series have been specifically developed for use in machines which have long free spans and when web deviation has to be minimized. The *FMS-webDIRECTOR* is placed after the free span (dimension L in the drawing). Because of the design with the turning point outside of the steering frame, the *FMS-webDIRECTOR* can also correct large deviations in the web position and guide the material back to the reference position. The dimensions can be exactly adapted to the customer's requirements due to the modular design.

### Compact and Robust

The *FMS-webDIRECTOR* series is characterized by a compact and robust construction. Fixing threads are available for mounting a manual or motorized adjustment for one or two sensors. The *FMS-webDIRECTOR* can be simply mounted on the machine frame with the extended profiles. The adjustment of the upper part of the frame that supports the rollers is made



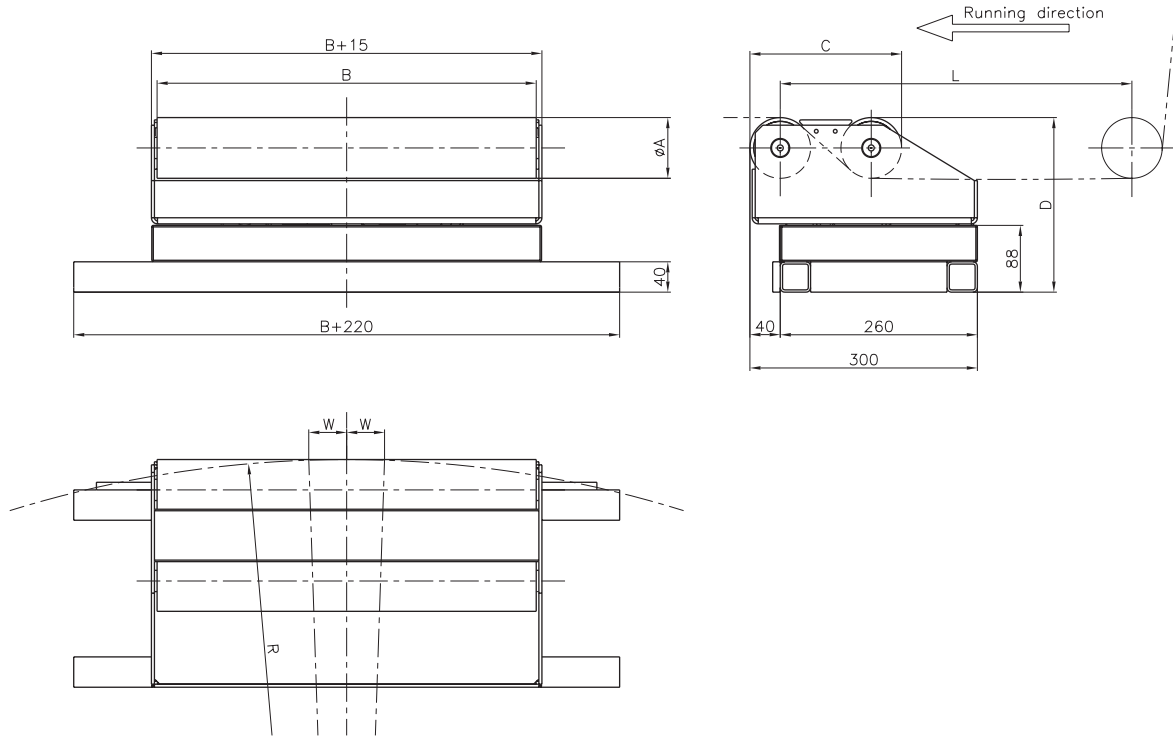
by a powerful DC or stepper motor with ball screw. The rollers are manufactured and balanced according to the customer's specification.

FMS-webDIRECTOR	040.[dim. B].[dim. C].[dim. A]		050.[dim. B].[dim. C].[dim. A]	
Roller diameter (dimension A)	80	100	150	200
Roller width (dimension B)	500 / 600 / 800 / 1000	800 / 1000 / 1200 / 1400 / 1600	1600 / 1800 / 2000	1600 / 1800 / 2000 / 2200 / 2500 / 2700
Frame length (dimension C)	2.5 x A			
Frame height (dimension D)	230	250	435	485
Steering radius (dimension R)	ca. 0.7 x L			
Free entry span (dimension L)	according to customer specification			
Steering offset (dimension W)	dependent on L, the elasticity of the web and the web tension			
Upper part bearing	4-Point			
Adjusting speed	50mm/s			
Drive	with ball screw and DC or stepper motor 24V / max. 6A			
Temperature range	0..45°C			
Protection class	IP30			

# FMS-webDIRECTOR 040

# FMS-webDIRECTOR 050

FMS-webDIRECTOR 040



FMS-webDIRECTOR 050

