

FMS-webMASTER 020

The steering frames of the *FMS-webMASTER 020* series have been specifically developed for use in narrow web applications such as:

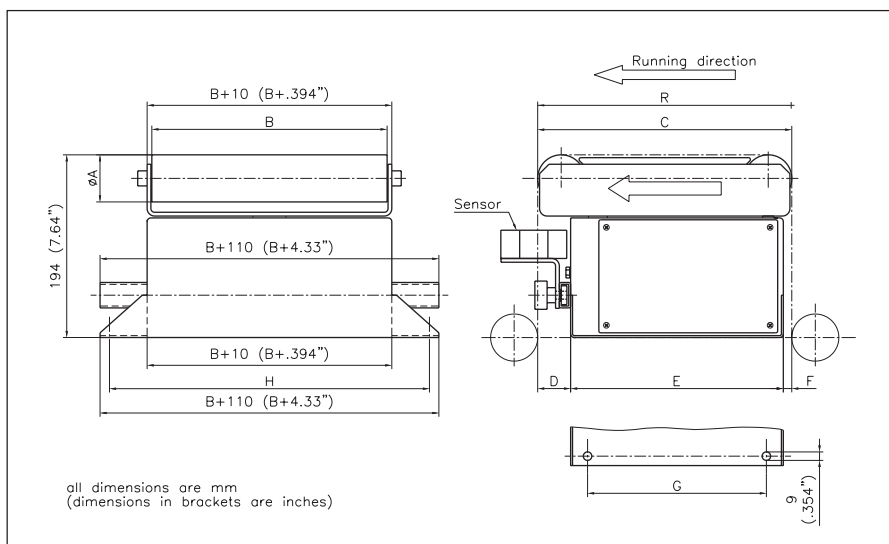
- label printing presses
- small slitters and rewinders
- film conversions
- small packaging lines
- etc.

They are characterized by a compact and robust construction and are available with the controller integrated into the frame on either side.

Compact Design

The *FMS-webMASTER 020* has an integrated mounting rail for two sensors. The sensors are attached to the rail by movable brackets. The frame is pre-wired and requires only a single power supply.

The adjustment of the upper part of the frame that supports the rollers is made by a powerful DC or stepper motor with a ball screw. The rollers are manufactured and balanced according to the customer's specification.



FMS-webMASTER	020.250.270.50	020.300.270.50	020.400.300.50	020.500.400.50	020.600.450.50
Roller diameter (dimension A)	50 (1.968")	50 (1.968")	50 (1.968")	50 (1.968")	50 (1.968")
Roller width (dimension B)	250 (9.84")	300 (11.81")	400 (15.75")	500 (19.68")	600 (23.62")
Frame length (dimension C)	270 (10.63")	270 (10.63")	300 (11.81")	400 (15.75")	450 (17.71")
Steering radius (dimension R)	270 (10.63")	270 (10.63")	300 (11.81")	400 (15.75")	450 (17.71")
Steering offset	±12 (±.472")	±12 (±.472")	±15 (±.590")	±20 (±.787")	±22 (±.866")
Dimension D	35 (1.38")	35 (1.38")	35 (1.38")	45 (1.77")	75 (2.95")
Dimension E	226 (8.90")	226 (8.90")	251 (9.88")	336 (13.23")	356 (14.01")
Dimension F	9 (.354")	9 (.354")	14 (.551")	19 (.748")	19 (.748")
Dimension G	190 (7.48")	190 (7.48")	215 (8.46")	300 (11.81")	320 (12.60")
Dimension H	340 (13.38")	390 (13.38")	490 (19.29")	590 (23.23")	690 (27.16")
Upper part bearing	3-Point				
Adjusting speed	50mm/s (1.97 In./s)				
Drive	with ball screw and DC or stepper motor 24V / max. 6A				
Temperature range	0...45°C (32...139°F)				
Protection class	IP30				

FMS-webMASTER 030

FMS-webMASTER 040

The steering frames of the *FMS-webMASTER 030* and *FMS-webMASTER 040* series offer many possibilities due to the modular design. In this way, the frame can be exactly matched to the customer's specific requirements. Therefore, they are suitable for all types of machines such as:

- printing presses
- slitters and rewinders
- laminating installations
- film and foil processing
- film welding installations
- etc.

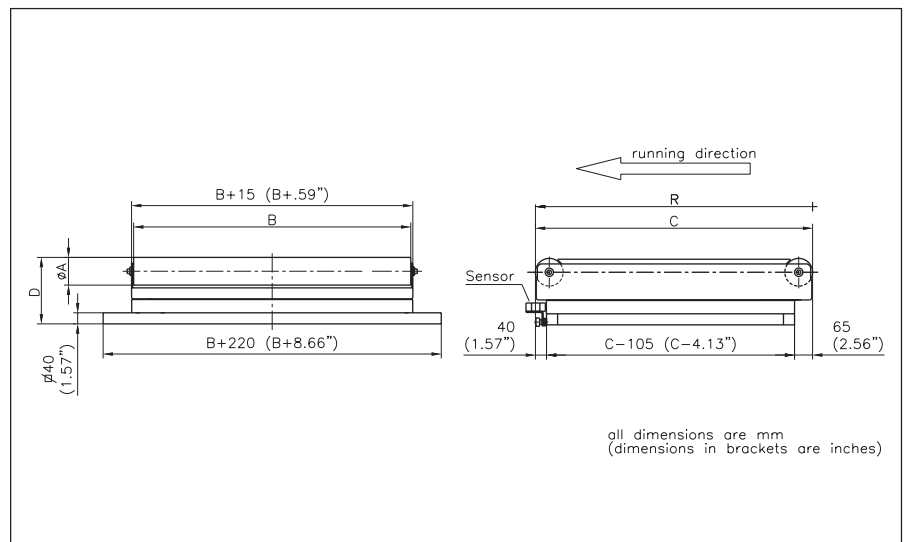
They are characterized by a compact and robust construction.



Modular Design

The *FMS-webMASTER 030/040* have fixing threads for mounting a manual or motorized adjustment for one or two sensors. The fixed lower part of the frame can be simply attached to the machine frame with the extended profiles.

The adjustment of the upper part of the frame that supports the rollers is made by a powerful DC or stepper motor with ball screw. The rollers are manufactured and balanced according to the customer's specification.



FMS-webMASTER	030.[dim. B].[dim. C].80	040.[dim. B].[dim. C].[dim. A]
Roller diameter (dimension A)	80 (3.149 ¹⁾)	80 (3.149 ¹⁾) 100 (3.937 ¹⁾)
Roller width (dimension B)	500 / 600 / 800 (19.68 ¹⁾ / 23.62 ¹⁾ / 31.50)	800 / 1000 / 1200 ¹⁾ / 1400 ¹⁾ / 1600 ¹⁾ (31.50 ¹⁾ / 39.37 ¹⁾ / 47.24 ¹⁾ / 55.12 ¹⁾ / 62.99 ¹⁾)
Frame length (dimension C)	from 0.5 x B to 1.0 x B (in 100mm (3.94 ¹⁾) steps)	
Frame height (dimension D)	230 (9.06 ¹⁾)	240 (9.45 ¹⁾)
Steering radius (dimension R)	as dimension C	as dimension C
Steering offset	±0.05 x C	±0.05 x C
Upper part bearing	3-Point	4-Point
Adjusting speed	50mm/s (1.97 In./s)	
Drive	with ball screw and DC or stepper motor 24V / max. 6A	
Temperature range	0...45°C (32...139°F)	
Protection class	IP30	

¹⁾ Roller width > 1000mm (39.37¹⁾) only with roller diameter = 100mm (3.937¹⁾)

FMS-webMASTER 050

The *FMS-webMASTER 050* series steering frames have been specifically developed for use in wide web applications such as:

- printing presses
- large slitters and rewinders
- aluminium and steel foil processing
- floor coverings and textiles
- etc.

They are characterized by a compact and robust construction.

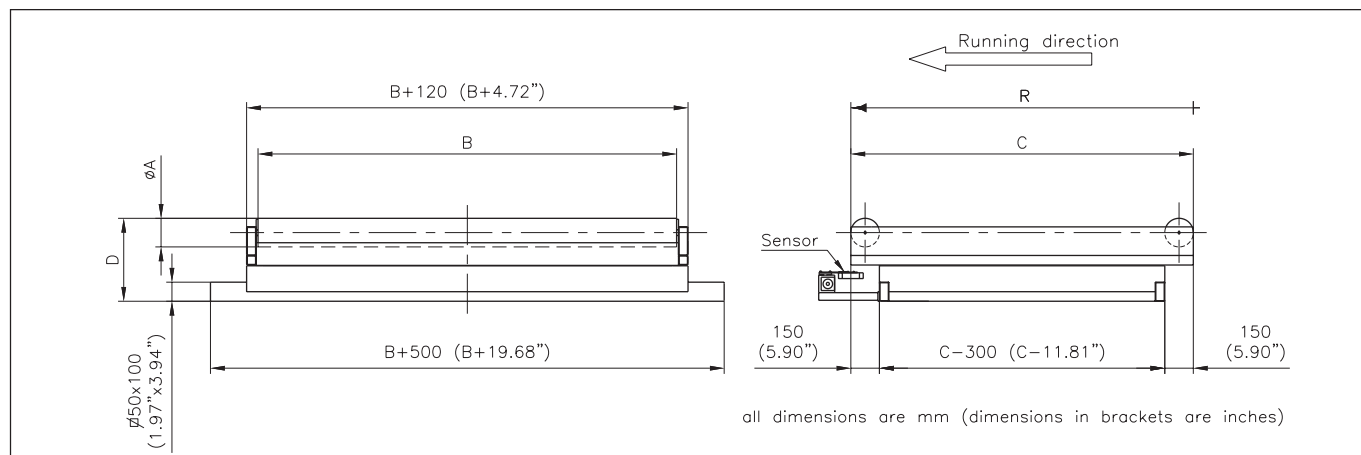
Open Concept

The *FMS-webMASTER 050* has fixing threads for mounting a manual or motorized adjustment for one or two sensors. The fixed lower part of the frame can be attached to the machine frame with the extended profiles. Due to the modular design, the steering frames of the *FMS webMASTER 050* series are adaptable to many different customer requirements.



The adjustment of the upper part of the frame that supports the rollers is made by a powerful DC or stepper motor with ball screw. The rollers are

manufactured and balanced according to the customer's specification.



FMS-webMASTER	050.[dim. B].[dim. C].150	050.[dim. B].[dim. C].200
Roller diameter (dimension A)	150 (5.90")	200 (7.87")
Roller width (dimension B)	1600 / 1800 / 2000 (62.99" / 70.87" / 78.74")	1600 / 1800 / 2000 / 2200 / 2500 / 2700 (62.99" / 70.87" / 78.74" / 86.61" / 98.42" / 106.30")
Frame length (dimension C)	from 0.5 x B to 1.0 x B (in 100mm (3.94") steps)	
Frame height (dimension D)	435 (17.13")	460 (18.11")
Steering radius (dimension R)	as dimension C	as dimension C
Steering offset	$\pm 0.05 \times C$	
Upper part bearing	4-Point	
Adjusting speed	50mm/s (1.97 In./s)	
Drive	with ball screw and DC or stepper motor 24V / max. 6A	
Temperature range	0...45°C (32...139°F)	
Protection class	IP30	