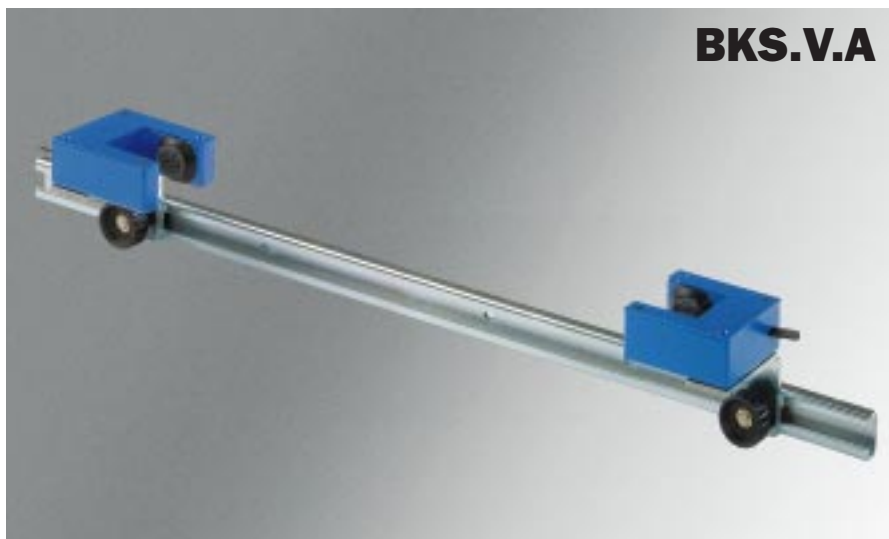


Manual Sensor Adjustment Motorized Sensor Adjustment

Manual Sensor Adjustment

The BKS.V.A manual sensor adjustment allows positioning of the sensors over the total width of the material. It consists of a steel profile, which is fixed to the steering frame, or separately mounted. The sensors are attached to the profile with brackets that may be moved sideways.

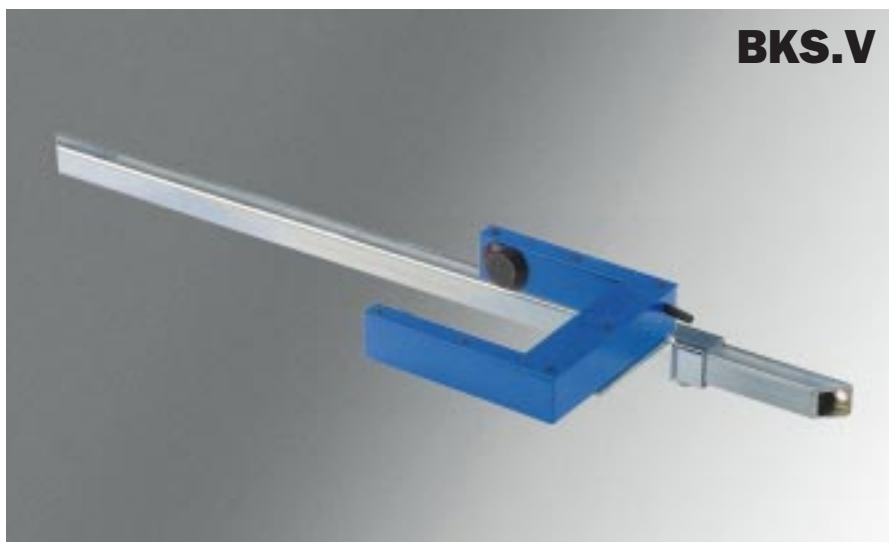
Specification code:
BKS.V.A.[length in mm]



Manual Sensor Adjustment

The BKS.V manual sensor adjustment allows positioning of the sensors over the total width of the material. Because of the closed steel profile the BKS.V allows larger distances between supports. Profiles of 20mm (.78") and 40mm (1.57") are available.

Specification code:
BKS.V.[length in mm].20
BKS.V.[length in mm].40



Motorized Sensor Adjustment

The BKS.T motorized sensor adjustment consists of an aluminium profile with a carriage that can be positioned over the total range of movement without play, by a stepper motor. Thus the material edge can be automatically searched over the complete width of the web.

The connecting cables (length to customer specification) are included. One motorized sensor adjustment is required per sensor.

Specification code:
BKS.T.[travel range in mm]

