

FMS-webDIRECTOR BKS 042 Series

Steering guide with virtual pivot point

For long entering span applications

Fast and precise positioning through powerful stepper motor

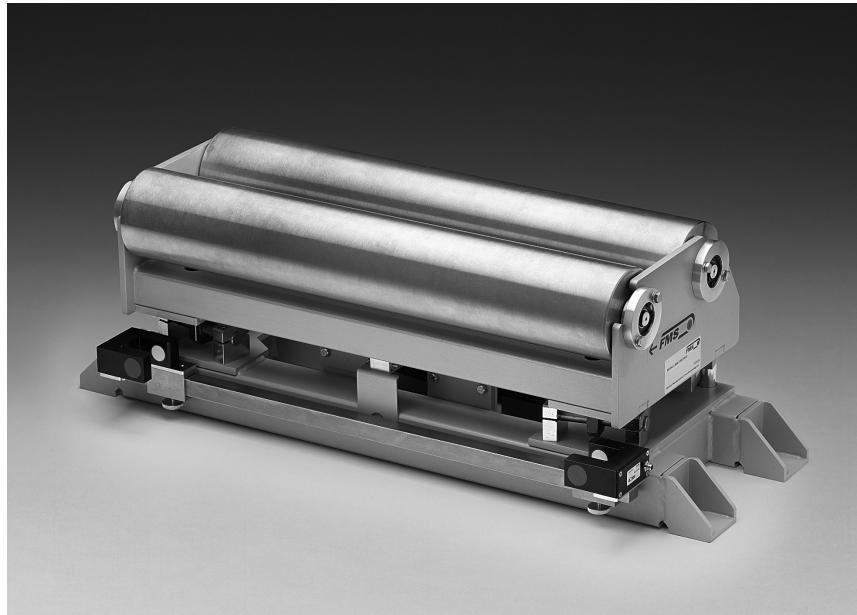
High precision at high machine speed

Roller length from 600 to 1600 mm

Large range of web applications

Compact and robust design

Reliable and maintenance free operation



● FMS-webDIRECTOR BKS 042

The FMS webDIRECTOR steering guides have been specially developed for machines that need a long free-span between inbound and steering roller. Typical applications are steering process after ovens, drying, printing or coating stations.

The mounting to the machine frame is easy and straight forward.

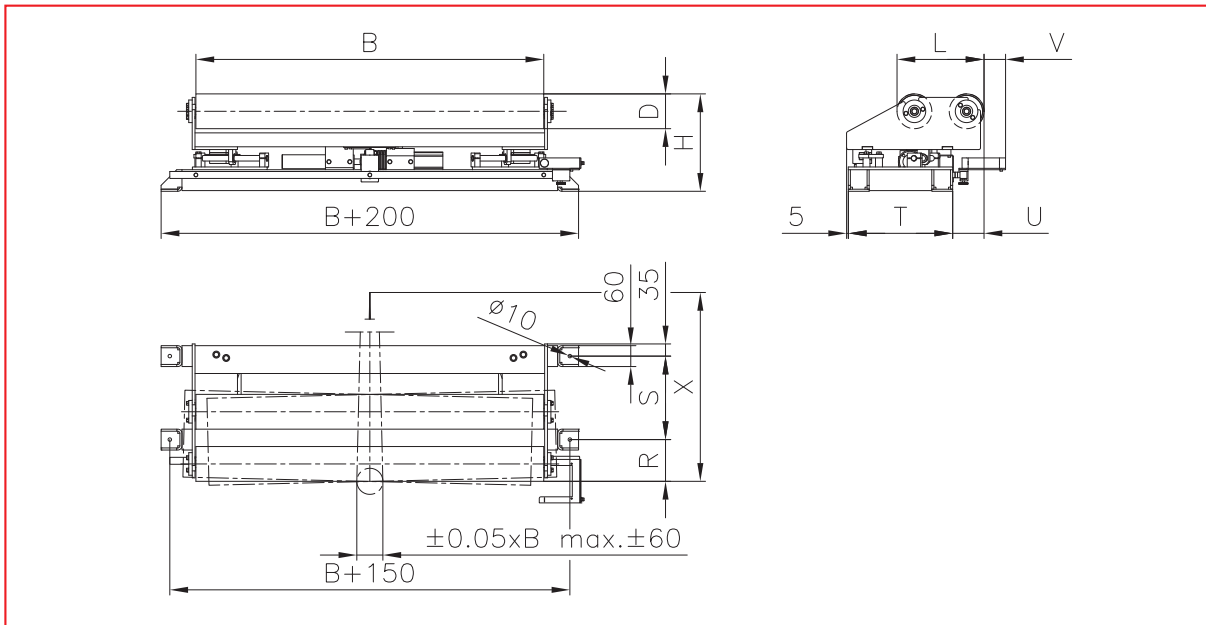
BKS 042 web guides are characterized by a compact, durable construction for low maintenance and long-lasting reliability.

● Functional Description

An important feature of the webDIRECTOR design is its virtual pivot point that can be position outside the steering frame. This speciality enables the BKS 042 to correct large deviations in the running web.

The WebDirectors can be equipped with a large range of material sensors available from FMS. The adjustment of the upper frame, that supports the rollers, is provided by a compact, powerful actuator. The here used ball screw spindle and stepper motor technology delivers a highly precise control with fast and accurate response.

FMS-webDIRECTOR BKS 042 • Dimensions in mm



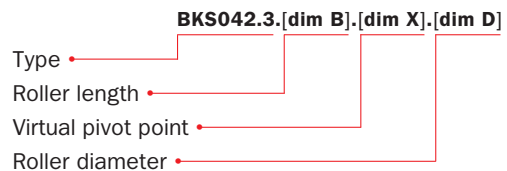
FMS-webDIRECTOR BKS 042 • Dimensions

	Dimensions in mm					
Roller width (B)	600	800	1000	1200	1400	1600
Virtual pivot point (X)	ca. 0.7 x free entry span (customer specific)					
Roller diameter (D)	100	100	100 / 150	100 / 150	100 / 150	100 / 150
Frame length (L)	250	250	250 / 370	250 / 370	250 / 370	250 / 370
(H)	280	280	280 / 330	280 / 330	280 / 330	280 / 330
(R)	75	75	120	120	120	120
(S)	170	170	240	240	240	240
(U)	45	45	90	90	90	90
(T)	230	230	300	300	300	300
(V)	33	33	62	62	62	62

FMS-webDIRECTOR BKS 042 • Technical Data

Free entry span (L)	according to customer specification
Steering offset	dependent on L, the elasticity of the web and the web tension
Upper part bearing	4-Point
Adjusting speed	>25 mm/s
Drive	ball screw and stepper motor 24 V/ max. 2.5 A
Temperature range	- 10...60 °C [14...140 °F]
Protection class	IP 30

Order code for FMS-webDIRECTOR BKS 042



Example: BKS042.3.1200.3800.150.D

World Headquarters:

FMS Force Measuring Systems AG
 Aspstrasse 6
 8154 Oberglatt (Switzerland)
 Phone + 41 44 852 80 80
 Fax + 41 44 850 60 06
 info@fms-technology.com

FMS USA, Inc.
 2155 Stonington Avenue
 Suite 119
 Hoffman Estates, IL 60169
 Phone +1 847 519 4400
 Fax + 1 847 519 4401
 fmsusa@fms-technology.com

FMS UK
 Highfield, Atch Lench Road
 Church Lench
 Evesham WR 11 4UG
 Phone + 44 1386 871023
 Fax + 44 1386 871021
 fmsuk@fms-technology.com

FMS Italy
 Via Baranzate 67
 20026 Novate Milanese
 Phone + 39 02 39487035
 Fax + 39 02 39487035
 fmsit@fms-technology.com