

## FMS-webMASTER 040 Web Guide

---

**Fast and precise positioning thanks  
a powerful motor design**

**High precision at high machine speed**

---

**Roller length from 600 to 1800 mm**

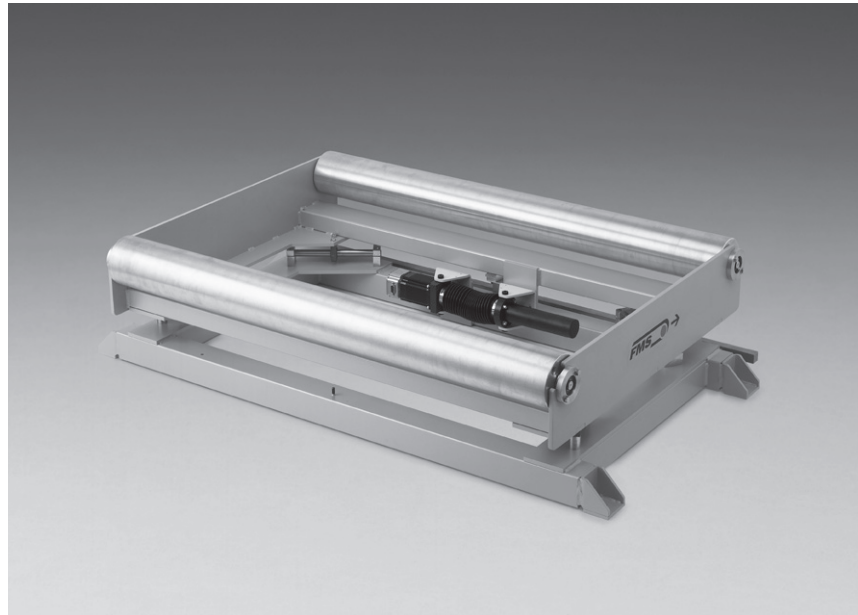
**Designed for mid-range web application**

---

**Compact and robust design**

**Reliable and maintenance free operation**

---



### ● FMS-webMASTER 040

The webMASTER 040 is a dedicated web guide series for web processing machines such as label printing presses, slitters, re-winders, film conversion equipment, packaging lines and many other applications. The web guides are characterized by their compact and simple construction. All webMASTER 040 types are prepared to accept one or two sensors.

The sensors are mounted on a bar and adjustable by a knurled nut, by a micro adjuster or by means of a motorized traverse.

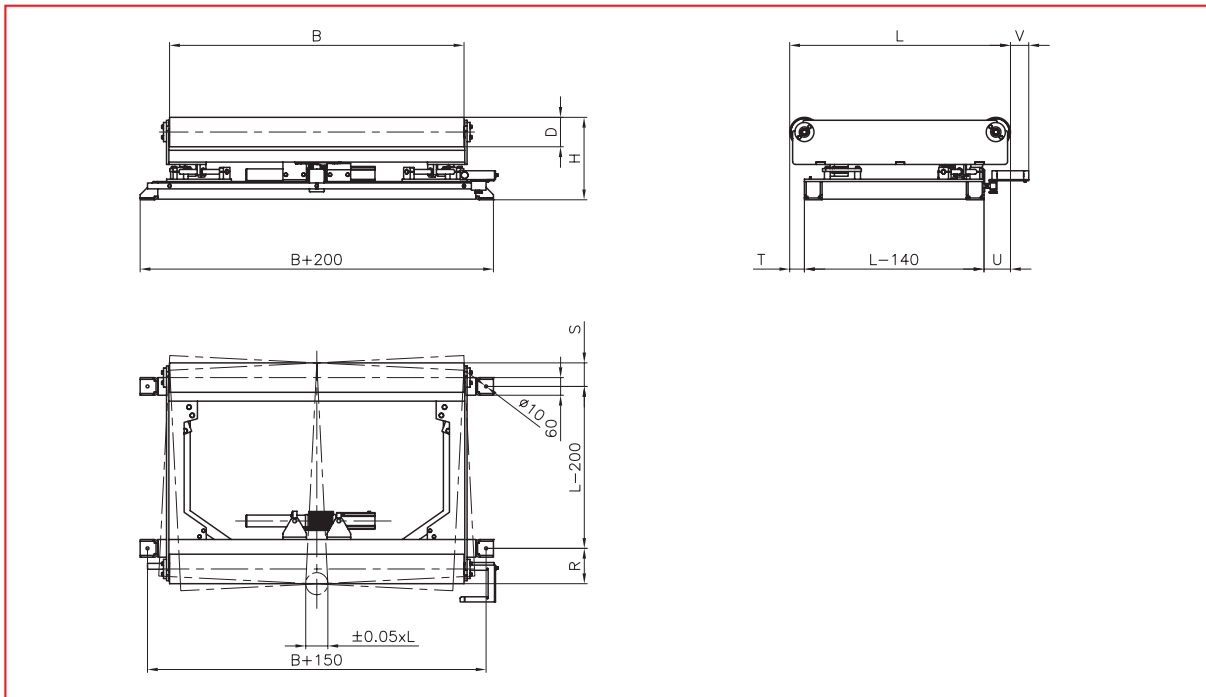
A wide range of analogue and digital sensors allow edge, center and line guiding.

A powerful stepper motor with a ball screw spindle adjusts the steering frame free of play and very precisely.

The rollers are manufactured and balanced to high standards.

Even the most demanding customer specification can be met. FMS web guide controllers of the BKS 110 C or the BKS 600 series can cover all your controlling needs starting from basic control up to high end applications.

**FMS-webMASTER 040 • Dimensions in mm**



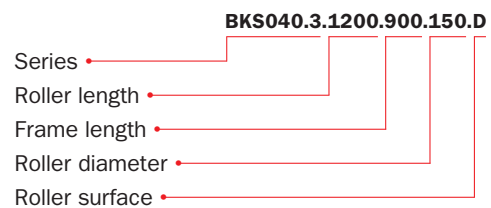
**FMS-webMASTER 040 • Dimensions in mm**

FMS-webMASTER	600	800	1000	1200	1400	1600	1800
<b>Roller width (B)</b>	600	800	1000	1200	1400	1600	1800
<b>Frame length (L)</b>	450	600	750	900	1000	1200	1200
<b>Roller diameter (D)</b>	100	100	100 / 150	100 / 150	100 / 150	100 / 150	100 / 150
<b>(H)</b>	280	280	280 / 330	280 / 330	280 / 330	280 / 330	280 / 330
<b>(R)</b>	75	75	120	120	120	120	120
<b>(S)</b>	55	55	80	80	80	80	80
<b>(U)</b>	45	45	90	90	90	90	90
<b>(T)</b>	25	25	50	50	50	50	50
<b>(V)</b>	33	33	62	62	62	62	62

**FMS-webMASTER 040 • Technical data**

<b>Correction</b>	$\pm 0.05 \times L$
<b>Supporting points</b>	4-Points
<b>Adjusting speed</b>	> 30 mm / s
<b>Drive</b>	with ball screw and stepper motor 24 V / max. 2.5 A
<b>Temperature range</b>	0...60 °C
<b>Protection class</b>	IP 30

**Order code (example):  
FMS-webMASTER 040**



**World Headquarters:**

**FMS Force Measuring Systems AG**  
 Aspstrasse 6  
 8154 Oberglatt (Switzerland)  
 Phone + 41 44 852 80 80  
 Fax + 41 44 850 60 06  
 info@fms-technology.com

**FMS USA, Inc.**  
 2155 Stonington Avenue  
 Suite 119  
 Hoffman Estates, IL 60169  
 Phone + 1 847 519 4400  
 Fax + 1 847 519 4401  
 fmsusa@fms-technology.com

**FMS UK**  
 Highfield, Atch Lench Road  
 Church Lench  
 Evesham WR 11 4UG  
 Phone + 44 1386 871023  
 Fax + 44 1386 871021  
 fmsuk@fms-technology.com

**FMS Italy**  
 Via Baranzate 67  
 20026 Novate Milanese  
 Phone + 39 02 39487035  
 Fax + 39 02 39487035  
 fmsit@fms-technology.com