

FMS-winderGLIDE Type D.6

Stepper Motor Actuator for guiding of a stand
High accuracy positioning

2500 N thrust force
High power in a compact design

125 mm and 200 mm steering offset
Two sizes for greater positioning flexibility

Multiple mounting options, durable housing
Flexible, heavy duty design

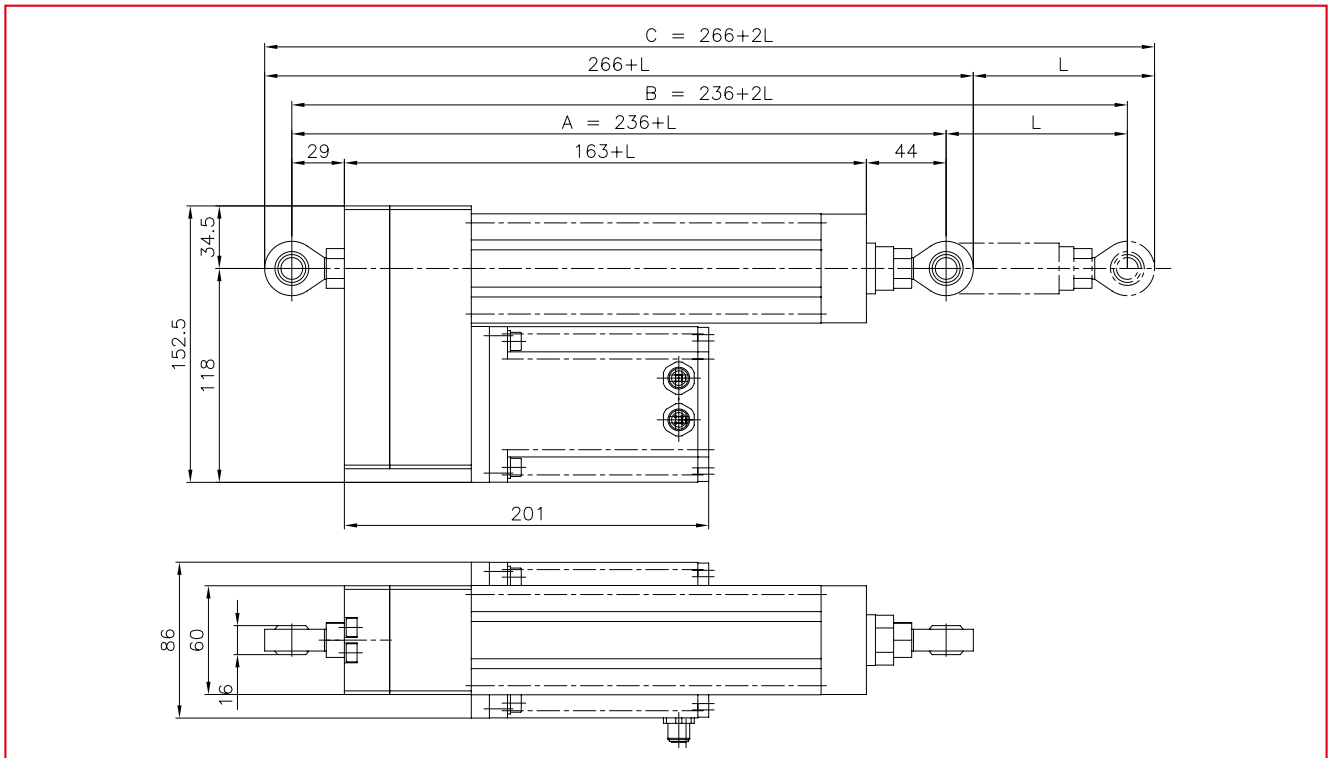


● Functional Description

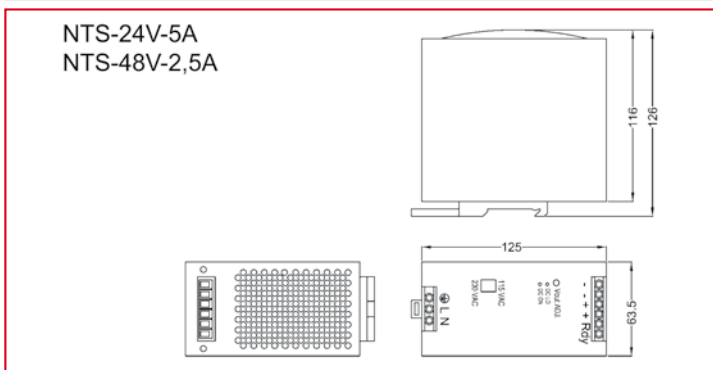
The FMS-winderGLIDE D.6 is an actuator designed for guiding unwind and rewind stands. It utilizes a powerful and high accuracy stepper motor with 2500 N of thrust force to ensure the most accurate positioning of even the heaviest stands. When compared to hydraulic systems, this actuator operates clean and is suitable for the food and pharmaceutical packaging industry.

The backlash free 5 mm pitch spindle/ ball screw systems are available in a choice of 125 mm or 200 mm lengths for greater positioning flexibility. Actuator and power supply are delivered as a complete drive unit. The two easily accessible connectors, multiple mounting options, and space-saving design make the FMS-actuator perfect for new machine designs or upgrading existing installations.

FMS-winderGLIDE Type D.6 • Dimensions in mm



FMS-winderGLIDE Type D.6 • Dimensions Power Supply Unit



Order code (example):

FMS-winderGLIDE Type D.6

Series BKS.D.6.125
Steering Offset •

Scope of delivery:

Actuator with spherical rod ends on both sides and corresponding power supply unit.

Not included in the scope of delivery are the preassembled cables and alternative mounting devices.

Following mounting devices can be ordered separately:

- Clevis
- Hinge
- Flange for front mounting

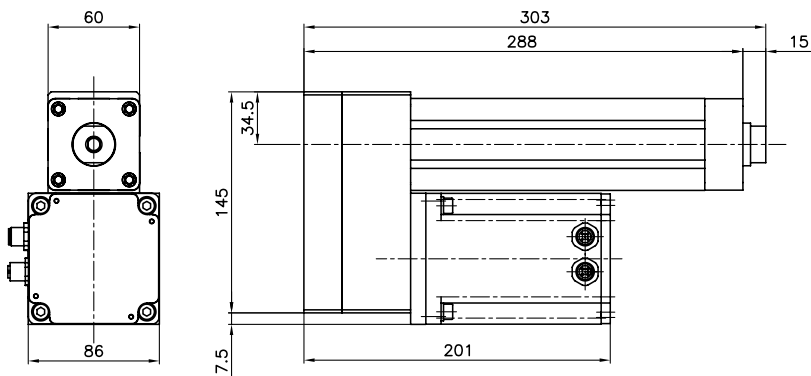
FMS-winderGLIDE Type D.6 • Dimensions in mm [inch]

Steering offset L	125 [4.9] or 200 [7.9]
Distance A in centre position of rod end	236 [9.3] + L
Length B at full travel position	236 [9.3] + 2L
Total length C	266 [10.5] + L
Power Supply Unit l x w x h	125 x 83 x 126 [4.9 x 3.3 x 5.0]

FMS-winderGLIDE Type D.6 • Technical Specification

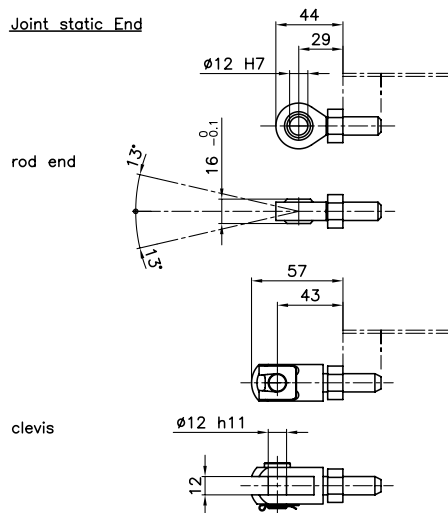
Spindle pitch	5 mm [0.2 inch]
Thrust force	2500 N [562 lbf]
Adjusting speed	25 mm/s [1 inch/s]
Drive	16 mm [0.63 inch] spindle/ball screw
Temperature range	-10...60 °C [14...140 °F]
Protection class	IP 50

FMS-winderGLIDE Type D.6 • Mounting Devices

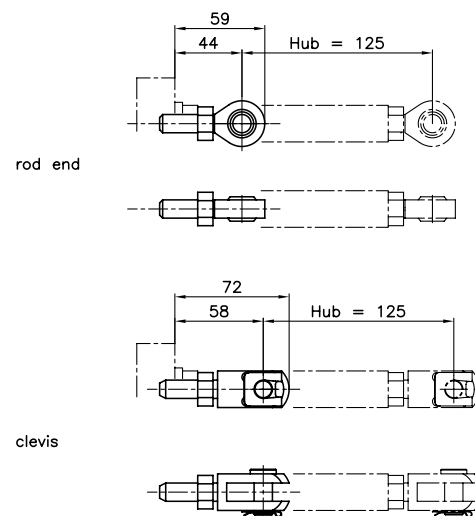


*free space for assembly

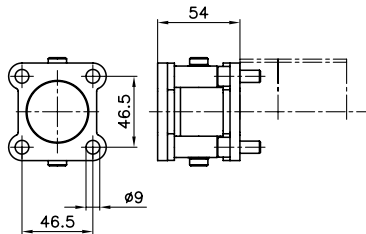
Joint static End



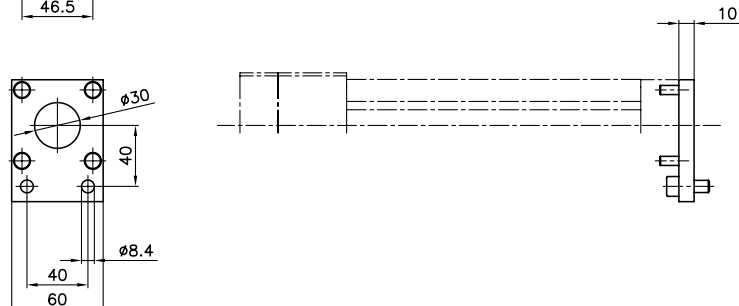
Joint moving End



hinge



flange



A wide range of web guiding controllers and sensors are available to work in conjunction with the BKS.D.6 actuator. Thanks to the large choice of system components the actuator can be used very flexibly.

FMS web guiding • Sensors

Ultrasonic edge sensors



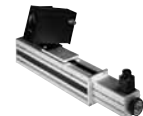
Optical edge sensors



Optical line sensors



Manual and motorized sensor adjustment



FMS web guide sensors are available in different styles **to detect the position of any type of web material.** They are available in several sizes **to accommodate a wide range of correction requirements.**

FMS web guide sensors are offered with a basic manual adjustment or an automatic motorized traversing adjustment driven by the web guide controller.

FMS web guiding • Web guide controllers

309 Series



600 Series



FMS web guide controllers are offered in several styles including **single and multi-channel** versions for controlling multiple web guides. They are specifically designed for the industry's increasing control requirements, faster machine speeds, and demand for **ease of installation and operation.**

FMS web guide controllers utilize high end microprocessors and provide **high flexibility** to control AC, or stepper motors as well as hydraulic valves.

FMS web guide controllers are offered with **several different integrated interfaces** including RS232, PROFIBUS®, Ethernet, CanOpen, etc.

World Headquarters:

FMS Force Measuring Systems AG
 Aspstrasse 6
 8154 Oberglatt (Switzerland)
 Phone + 41 44 852 80 80
 Fax + 41 44 850 60 06
 info@fms-technology.com

FMS USA, Inc.
 2155 Stonington Avenue
 Suite 119
 Hoffman Estates, IL 60169
 Phone + 1 847 519 4400
 Fax + 1 847 519 4401
 fmsusa@fms-technology.com

FMS UK
 Highfield, Atch Lench Road
 Church Lench
 Evesham WR 11 4UG
 Phone + 44 1386 871023
 Fax + 44 1386 871021
 fmsuk@fms-technology.com

FMS Italy
 Via Baranzate 67
 20026 Novate Milanese
 Phone + 39 02 39487035
 Fax + 39 02 39487035
 fmsit@fms-technology.com