

# Data Acquisition Form

Force sensors for rolls without shaft



## Contact Information

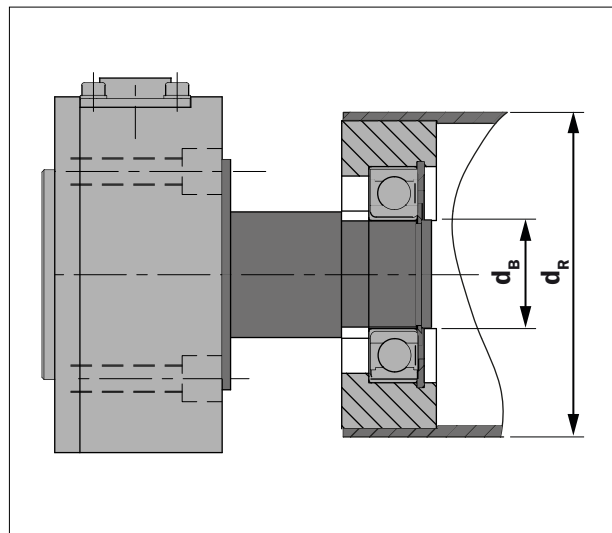
Company	Project
Name, first name	Tel.
Email	

## Process Data

Min. material tension	N	Max. material tension	N
Tension / mm web width	N	Roller weight	N
Web width B	mm	Rotation speed roll	rpm
Inner- $\varnothing$ bearing $d_B$	mm	Roll diameter $d_R$	mm
Wrap angle $\alpha$	$^\circ$	Entry angle $\beta$	$^\circ$
Exit angle $\gamma$	$^\circ$	Material speed	m/Min
No. of force sensors	Material		

## Options (depending on force sensor series and size)

H14	right-angle connector, replaces straight connector
H15	connector offset 90°, red point on connector side
H16	temperature range up to 120°C (248°F)
H18	water tight, straight connector
H21	electrical connection with PG gland, 5 m (16 ft.) cable
H28	red point offset 180°
H29	aggressive media (acids)
H30	aggressive media (solvents, hydrocarbons), silicone free
H31	vacuum to 1E-7 hPa, 1E-5 Torr, up to 120°C (248°F)
H32	vacuum up to 150°C (302°F), pg-gland, 5 m (16 ft.) cable
H33	temp. up to 150°C (302°F), pg-gland, 5 m (16 ft.) cable



## Force Sensor Series Preferences

ZMGZ-Series	CZ-Series
-------------	-----------

## Installation Options (CZ-Series)

FL	flat face of force sensor, without shoulder, single screw mount, with dowel pin
PH	Flange mount with 4 screws, pilot hole for centering

## Installation (Please provide a sketch of the web path including entry and exit angle, if possible)

<p><b>Example</b></p> <p><math>\beta = 70</math> <math>\gamma = 135</math> <math>\alpha = 65</math></p>	<p><b>Your sketch</b></p>
---	---------------------------

## Related Products

Install. bracket	Amplifiers	Cables	Connectors	Nuts & Bolts
------------------	------------	--------	------------	--------------