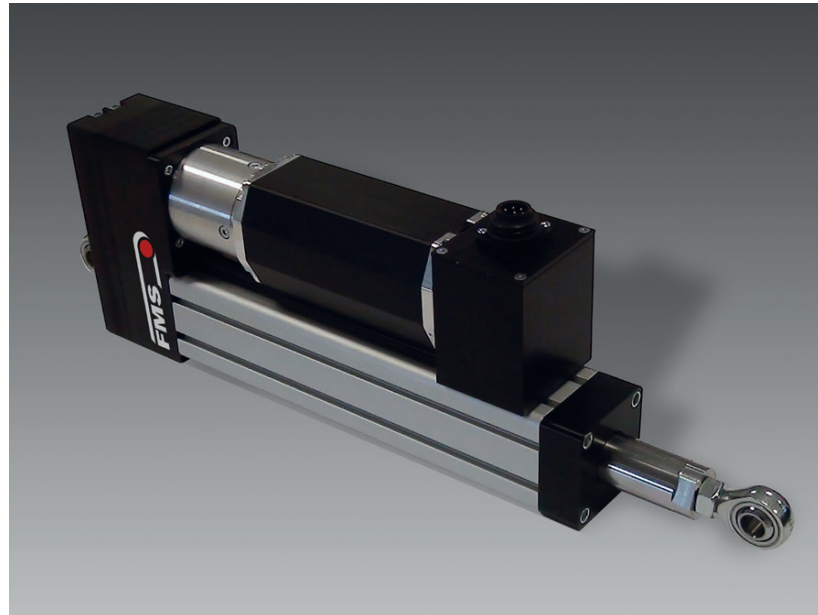


FMS Web Guiding / FMS winderGLIDE

BKS.D.7 FMS winderGLIDE Actuator with 4'000 N Thrust

- **4'000 N (900 lbf) Thrust:**
Very powerful, compact design
- **Fast BLDC motor, backlash-free ball screw:**
Precise, robust and maintenance free
- **200 mm (7.87 in.) and 300 mm (11.8 in.) stroke:**
Wide correction range
- **Versatile Mounting Options:**
Perfect for New or Retrofit Applications



FMS winderGLIDE BKS.D.7

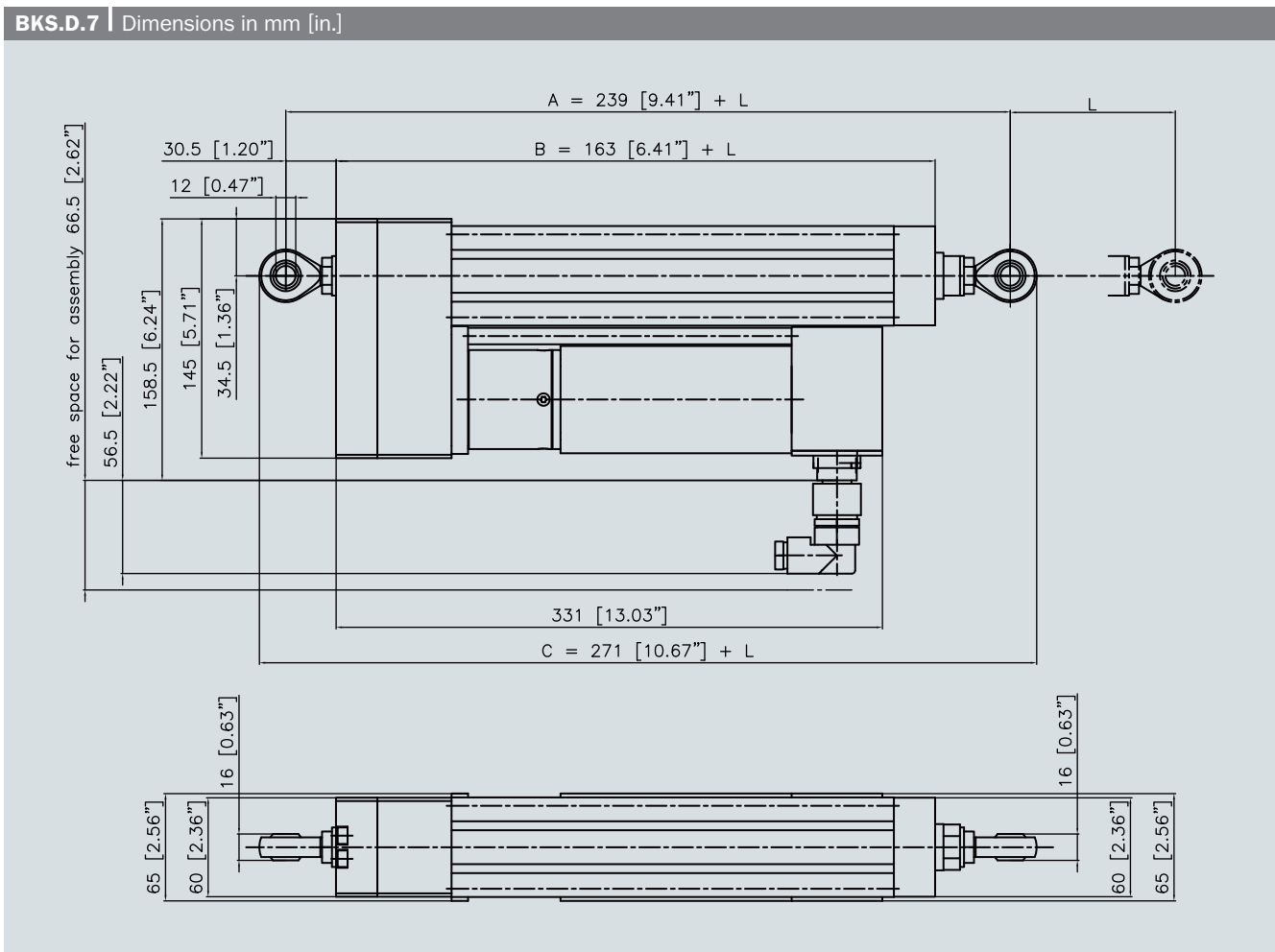
The actuators of the FMS winderGLIDE series are specifically designed for use in winding and unwinding applications where lateral web adjustment is required. The compact size and flexible mounting options provides for straightforward integration in most applications. As there are no fluids to leak from the FMS winderGLIDE series of actuators, they are perfect for use in the food or pharmaceutical packaging industries where contamination cannot be tolerated.

Functional description

FMS winderGLIDE actuators incorporate a backlash-free ball screw that is driven by a powerful and fast BLDC motor. These design features provides precise web correction.

For ease of installation there is only a single cable, providing both power and control functions, that connects the actuator to the web guide controller.

Parameters within the controller including movement speed, retracted position, center position, extended position, etc. allow for the actuator operation to be finely tuned to suit the requirements of each application.



BKS.D.7 | Dimensions in mm [in.]

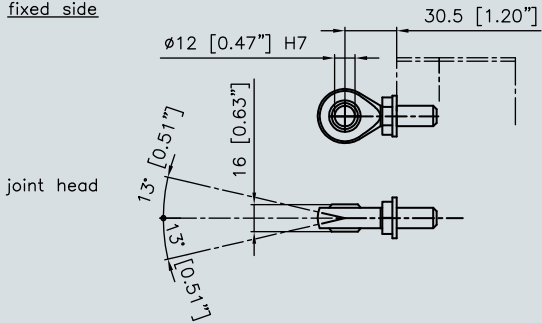
Strokes L	200 (7.87)	300 (11.8)
A Centers of rod ends, fully retracted	439 (17.28)	539 (21.2)
B Total length main body	363 (14.3)	463 (18.2)
C Overall length, fully retracted	471 (18.5)	571 (22.5)

BKS.D.7 | Technical data

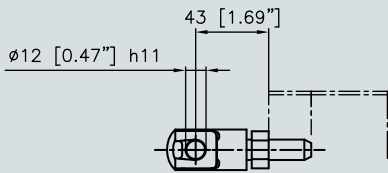
Max. thrust	4'000 N (900 lbf)
Max. movement speed	25 mm/s (0.98 in/s)
Drive train	BLDC motor, 10:1 planetary gear, 16 mm ball screw with 5 mm pitch
Temperature range	-10 to +50 °C (14 to 122 °F)
IP protection rating	IP42
Control accuracy	< ±0.1 mm
Power consumption	Max. 160 W, from BKS309 controller
Stroke limiter, distance measurement	Potentiometer

BKS.D.7 | Installation accessories

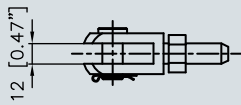
fixed side



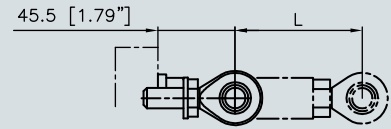
joint head



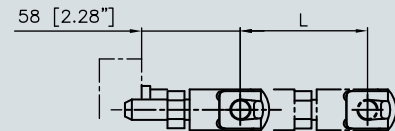
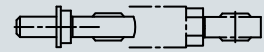
yoke



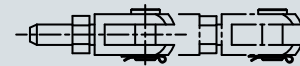
movable side



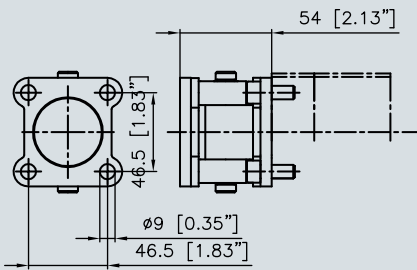
joint head



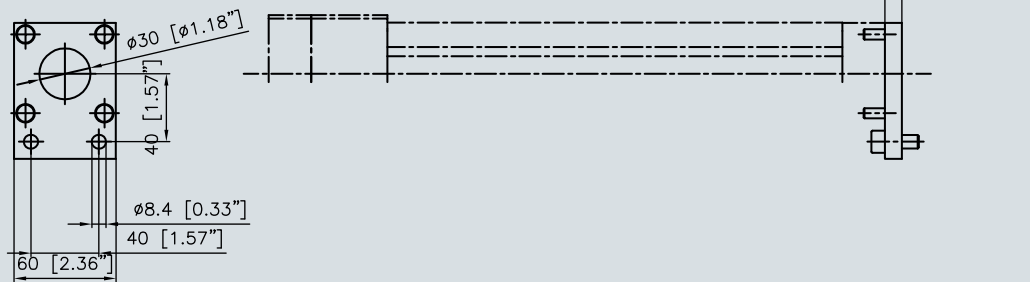
yoke



hinge



adapter



BKS.D.7 Order code		
BKS.	D.7	200
		Stroke in mm (200 or 300)
		Size
Series		

BKS.D.7 Accessories	
Web guiding controller	BKS309
Material sensors	ultrasonic, optical, line
Installation accessories	see next page

BKS.D.7 Scope of supply	
• Actuator, two sperical rod ends	• Installation manual

BKS.D.7 Not included in scope of supply		
• Web guiding controller	• Installation material	• Material sensor
• Connecting cable to web guiding controller		

Other Products | Web Guiding

Steering frames, steering rollers	Web guiding controllers	Material sensors
		

FMS winderGLIDE BKS.D.3 | Typical application



FMS Force Measuring Systems AG

FMS Force Measuring Systems AG is a worldwide market leader in the fields of tension measurement/control, web guiding, and specialized telemetry technologies. Our standard and custom solutions are applied in the converting, metals, paper, textile and wire & cable industries. FMS Force Measuring Systems AG's advanced technology, high quality components and extensive application knowledge supports customers around the world in maximizing productivity. Since 1993 our highly skilled workforce has crafted superior solutions and set the benchmark in the industry.